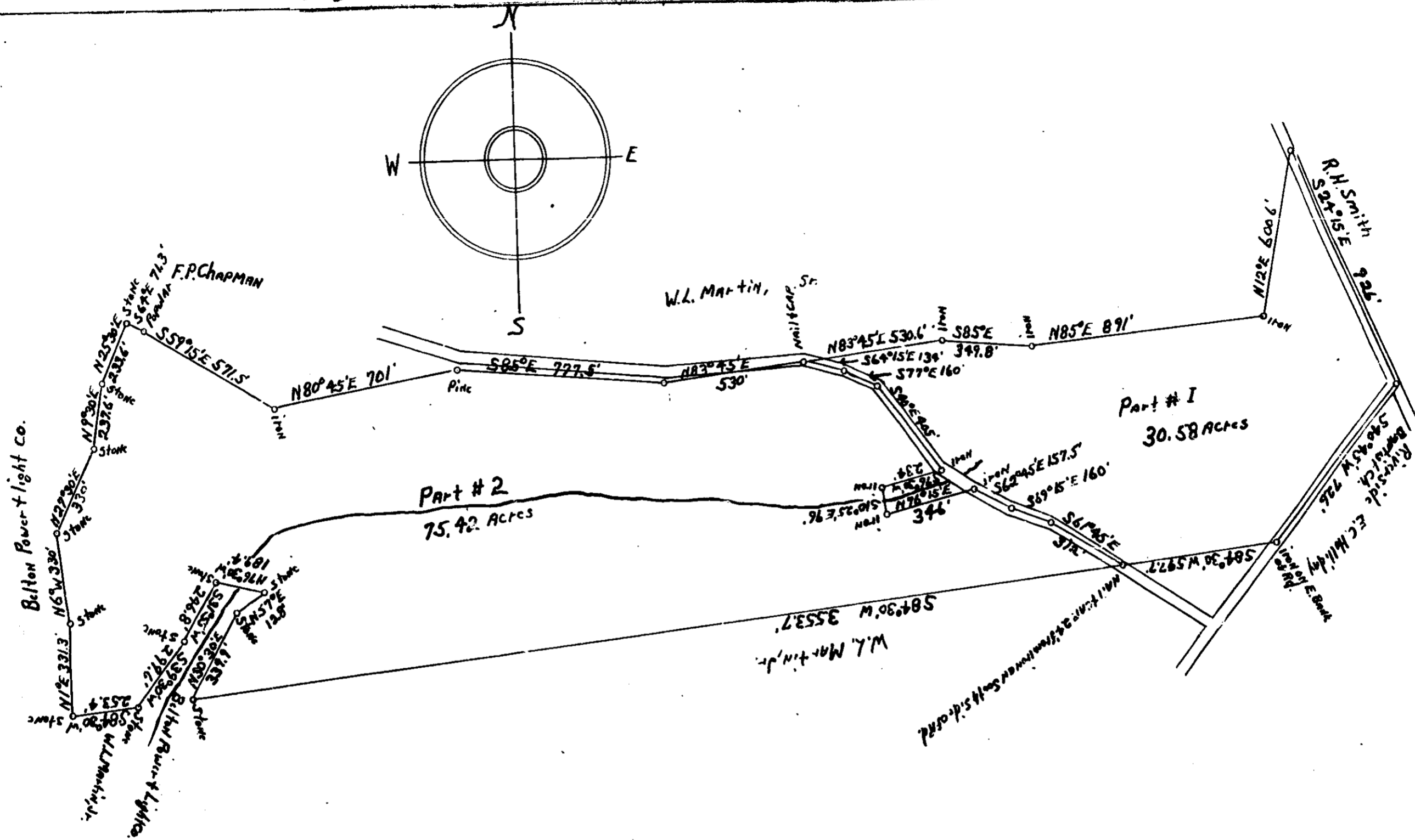


# Plat Book PP, Page 4/4



South Carolina  
Greenville County

Plat Showing  
Land for  
Berry L. Knight  
106 Acres  
Scale: 1" = 400' Sept. 26, 1958  
T. J. Leslie, Reg. Surveyor  
H. J. Martin, Ass't.

OCT 15 1958  
9864

FILED  
GREENVILLE CO. S. C.  
OCT 15 3 26 PM 1958  
W. H. WORTH  
REGISTER

9864. Plat This 15 day of OCT 1958  
and Recorded in Vol. P.P. Page 44 of  
Cassie B. Sawyers  
Register Means Conveyance Greenville County, S.C.

PP 44 100